

Expert Learners

Affective Networks



Alt Text: Illustration of the human brain with the affective regions outlined in green.

We are developing as learners who are

**Purposeful
and
Motivated.**

The "WHY"
of Learning

**Multiple Means of
Engagement**
give us a variety of
opportunities to feel
connected and
involved as learners.

Recognition Networks



Alt Text: Illustration of the human brain with the recognition regions highlighted in purple.

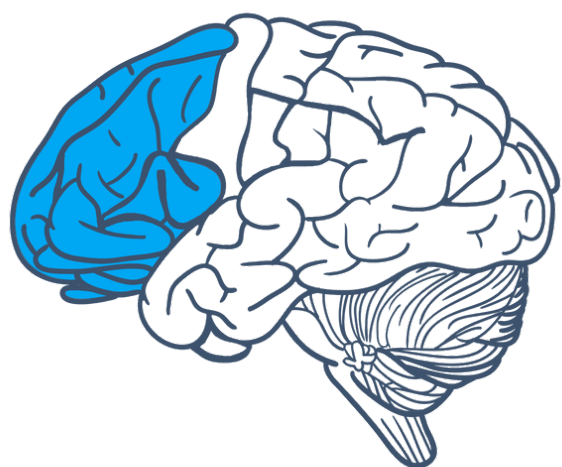
We are developing as learners who are

**Resourceful
and
Knowledgeable.**

The "WHAT"
of Learning

**Multiple Means of
Representation**
give us many ways to
understand
information and ideas.

Strategic Networks



Alt Text: Illustration of the human brain with the strategic regions highlighted in blue.

We are developing as learners who are

**Strategic
and
Goal-Directed.**

The "HOW"
of Learning

**Multiple Means of
Action & Expression**
give us a variety of ways
to navigate and express
what we are learning.

